

# **MARC 21, RDA, and the FRBR and FRAD models**

... making the connections

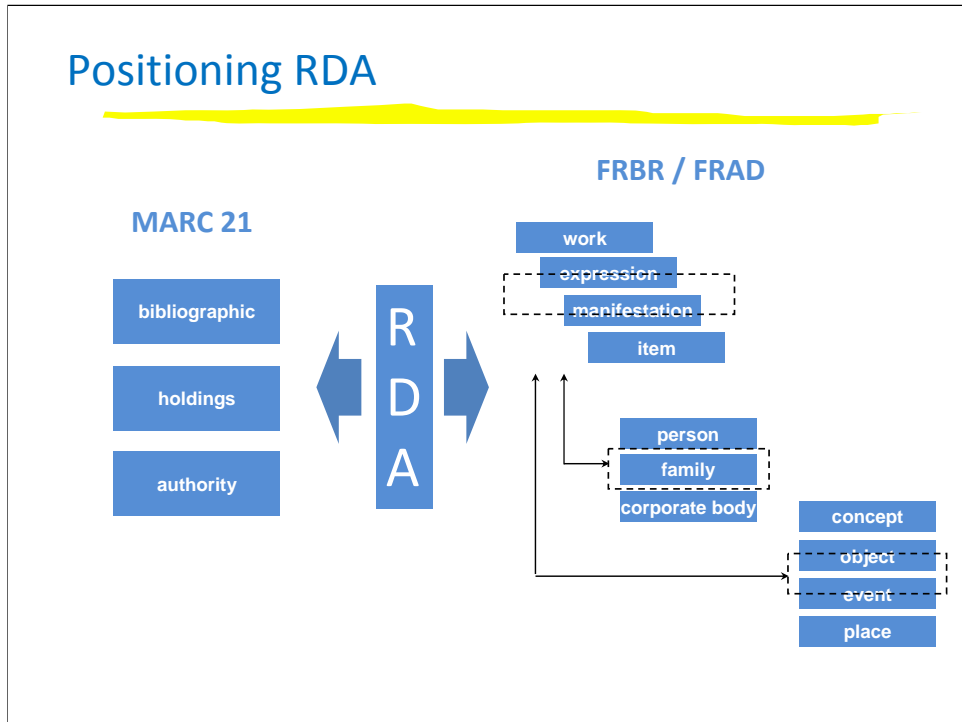


## RDA element set

---

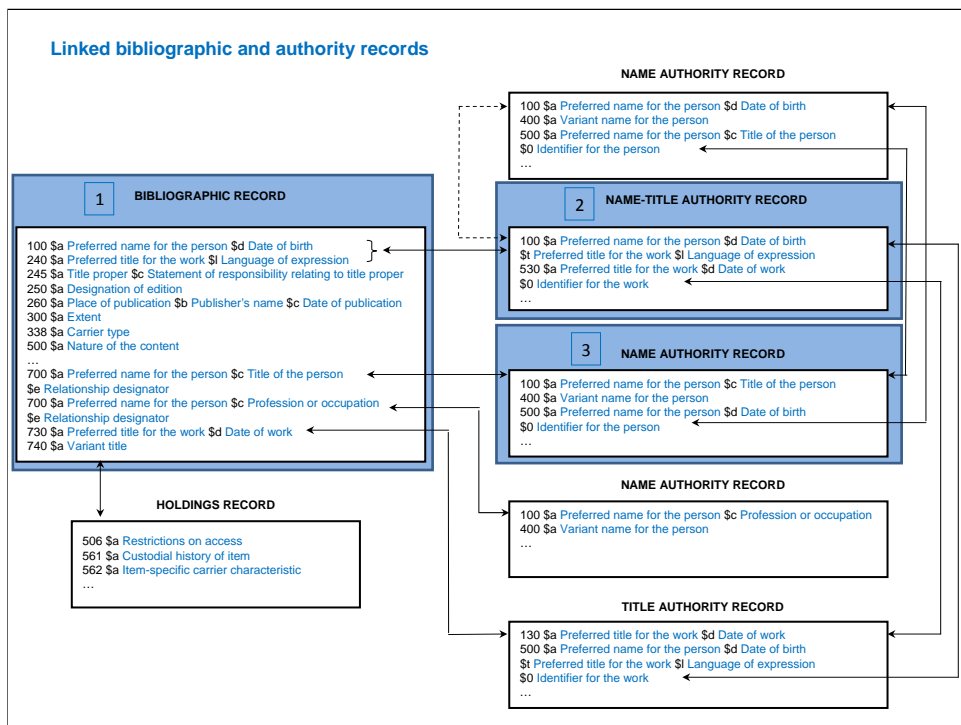
- Designed to be compatible with MARC 21
  - *Assumption:* most libraries creating RDA data are currently using an ILS that imports/exports data in MARC 21
- Aligned with FRBR and FRAD models
  - *Assumption:* libraries will begin migrating to a new generation of systems using reflecting entity-relationship models

# Positioning RDA



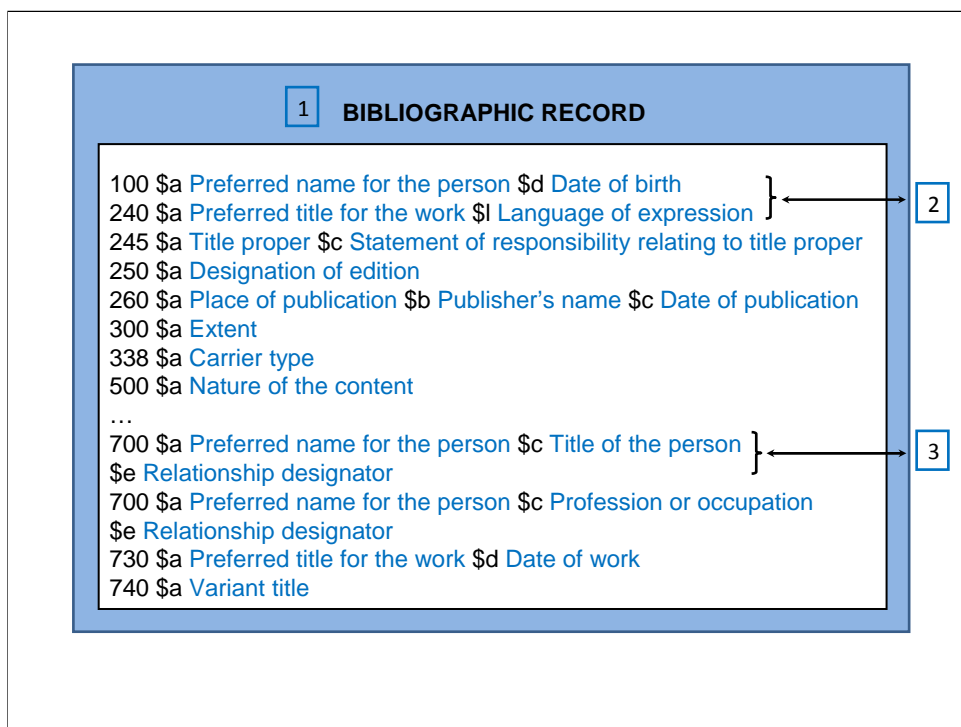
## **RDA positioned to mediate between MARC 21 and FRBR/FRAD models**

- RDA data can be exported/imported in MARC 21 format
- Can be stored in databases mirroring the MARC 21 record structure
- Can be stored in databases mirroring the FRBR/FRAD entity-relationship models
- Adaptable to future changes in MARC 21 that are aligned with FRBR/FRAD
- Also adaptable to import/export in other encoding schema aligned with FRBR/FRAD



## RDA data stored in a database mirroring the MARC 21 structure

- Bibliographic record
- Holdings record (linked to bibliographic record)
- Authority records (linked to access point fields in bibliographic record)



### Attributes of manifestation

- Title proper (245 \$a)
- Statement of responsibility relating to title proper (245 \$c)
- Designation of edition (250 \$a)
- [etc.]

### Attributes of work

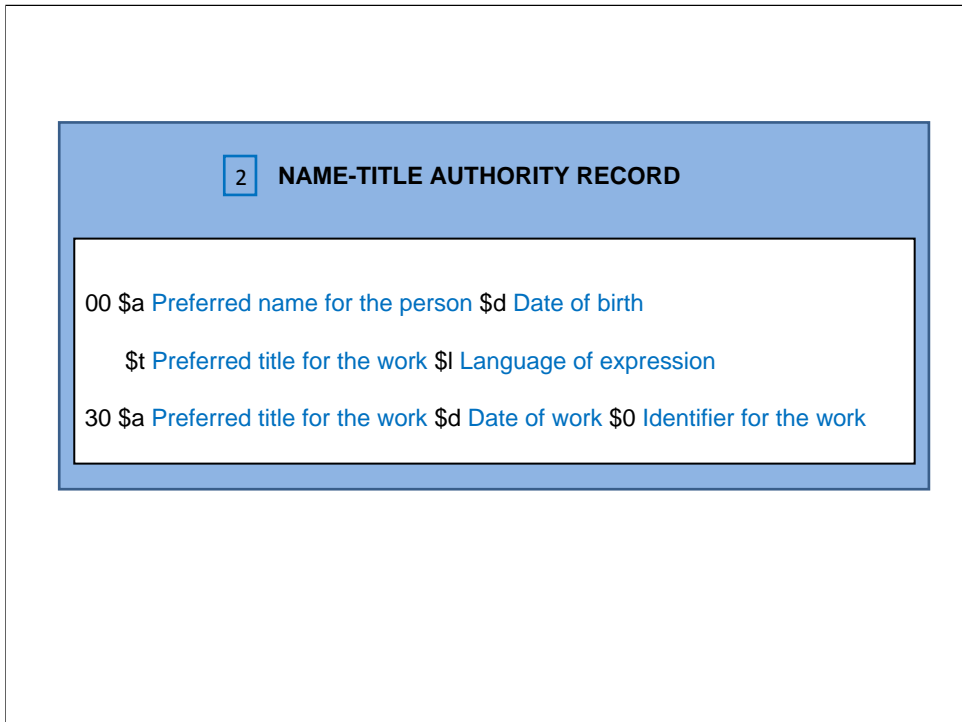
- Preferred title for the work (240 \$a)
- Nature of the content (500 \$a)

### Attributes of expression

- Language of expression (240 \$l)

### Relationships represented as main and added entry access points

- Work embodied in manifestation represented by main entry access point (100) + uniform title (240)
- Persons associated with the work and expression represented by main and added entry access points (100/700)
- Related work represented by added entry access point (730)
- Access points linked to authority records for related entities

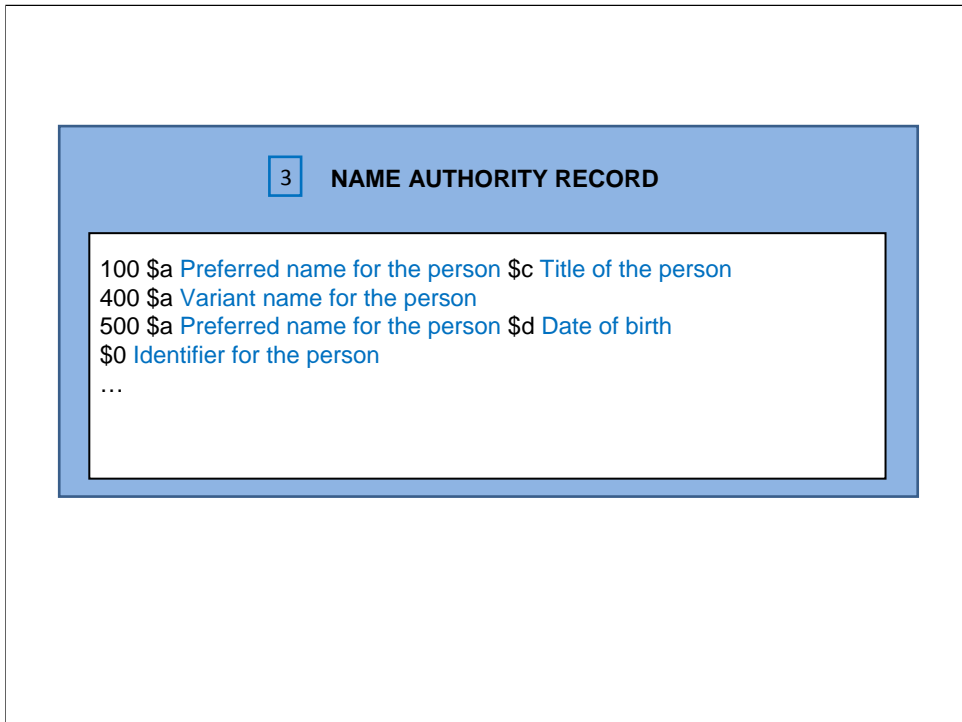


**Attributes identifying works/expressions stored as a pre-coordinated access points**

- Authorized heading (100) combines attributes of person associated with the work (\$a, \$d) with an attribute of the work itself (\$t) and an attribute of the expression (\$l)
- See also tracing (530) identifies related work (with link to related authority record)

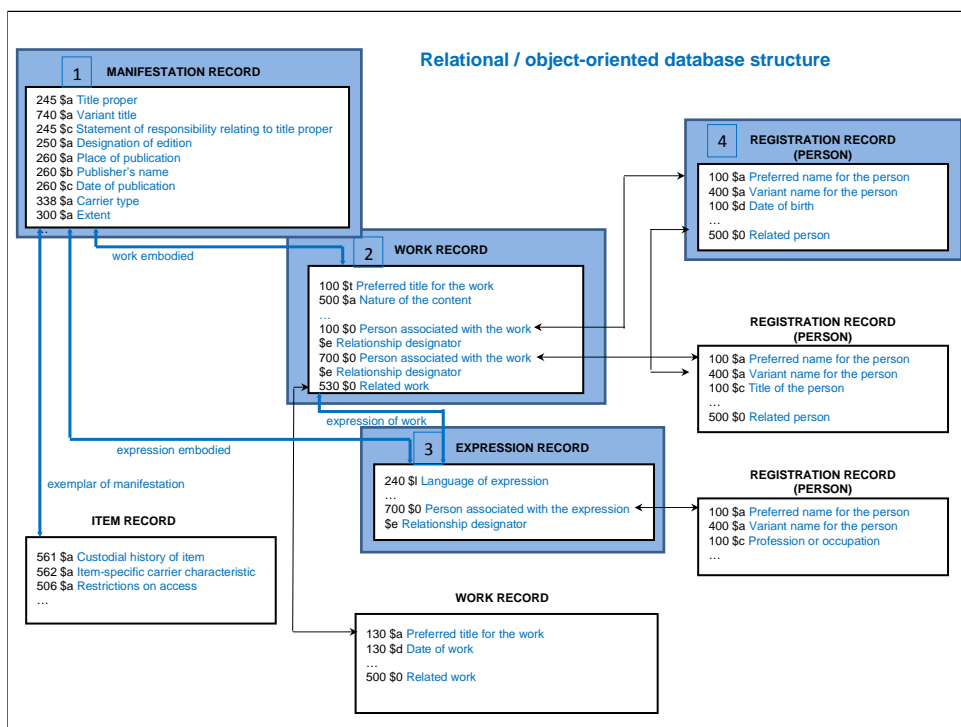
**Separate authority records for persons associated with the work/expression**

- No direct link to record for person identified in authorized heading for the work (100 \$a, \$d)
- No data in name-title authority record identifying other persons associated with work or expression (collaborator, contributor, etc.)



**Attributes identifying persons stored as a pre-coordinated access points**

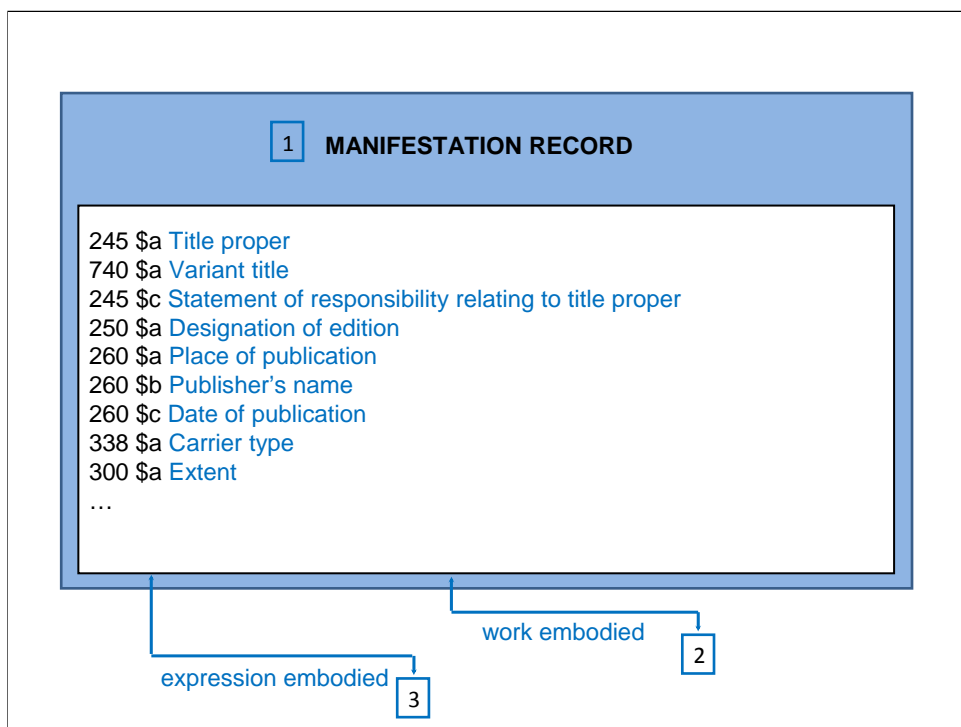
- Authorized heading (100) combines preferred name for the person (\$a) with title of the person (\$c)
- See also tracing identifies related person (with link to related authority record)



### RDA data stored in a database mirroring the FRBR/FRAD structure

- Manifestation record
- Item record
- Work record
- Expression record
- Registration records (person, family, corporate body, etc.)
- Primary relationships between work, expression, manifestation, and item represented by links between records
- Relationships between entities represented by links between records



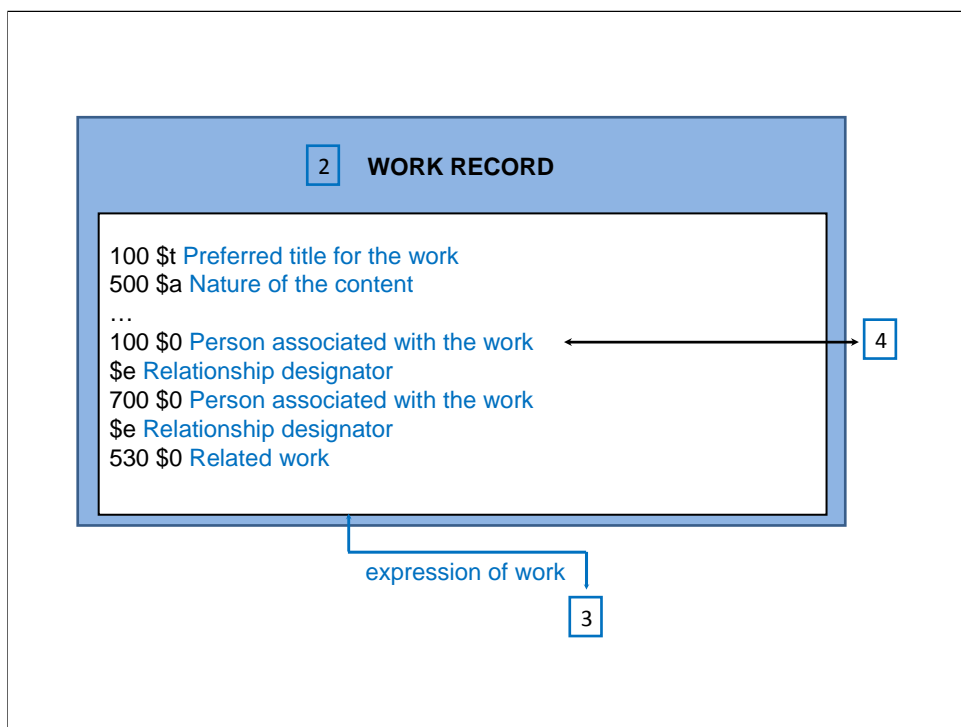


### Attributes of manifestation

- Title proper (245 \$a)
- Variant title (740 \$a)
- Statement of responsibility relating to title proper (245 \$c)
- Designation of edition (250)
- [etc.]
- All elements derived from MARC 21 bibliographic record
- Stored in logical groupings paralleling FRBR model

### Primary relationship

- relationship to work embodied in manifestation represented by link to work record
- relationship to expression embodied in manifestation represented by link to expression record



### Attributes of work

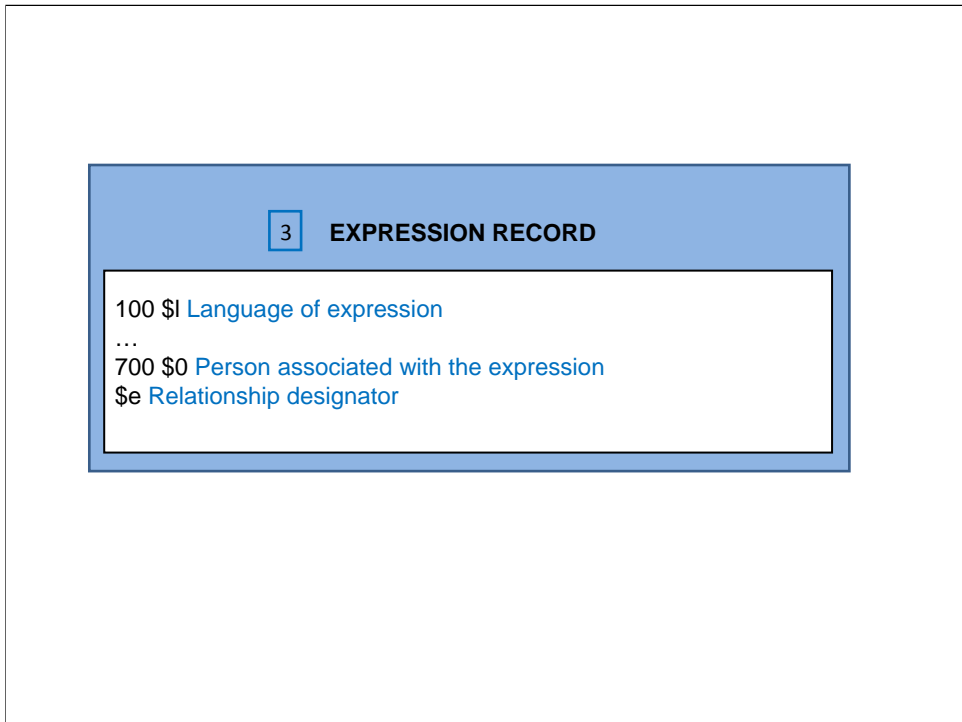
- Preferred title for the work (100 \$t)
- Nature of the content (500 \$a)
- Elements derived from MARC 21 authority record (100 \$t) as well as from bibliographic record (500 \$a)

### Primary relationship

- Relationship to expression of work represented by link to expression record

### Related entities

- Elements derived from MARC 21 authority record (100/530 \$0) as well as from bibliographic record (700 \$0)
- Relationship to persons associated with the work represented by links to related records (100/700 \$0) with relationship designators (100/700 \$e)
- Relationship to related work represented by link to related record (530 \$0)
- Relationship to related work(530) could be enhanced with addition of RDA relationship designator

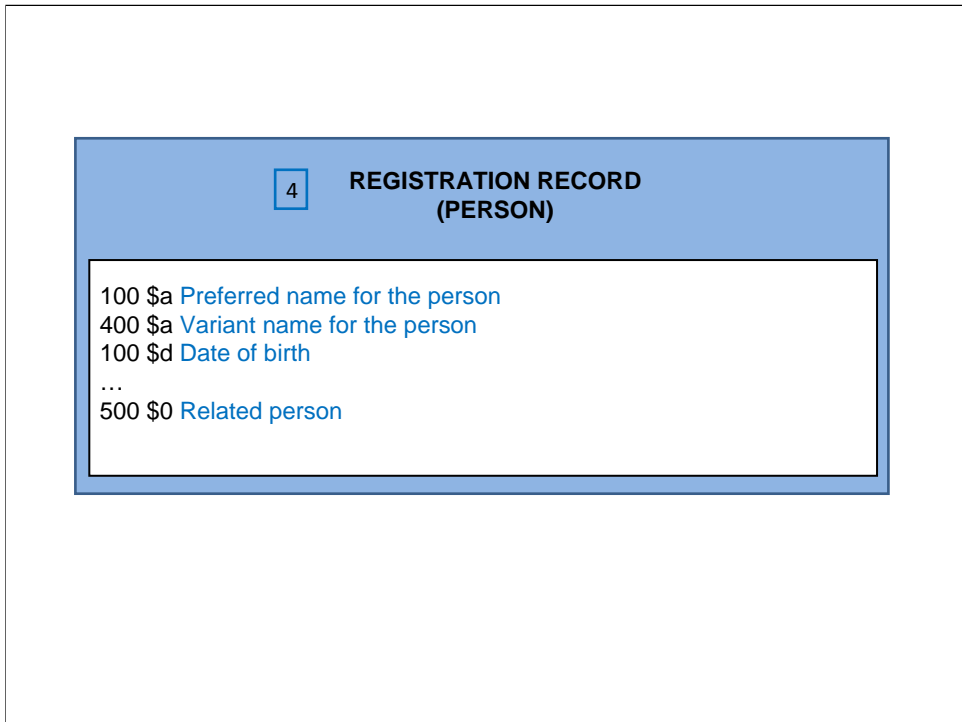


### Attributes of expression

- Language of expression (100 \$I)
- Elements derived from MARC 21 authority record (100 \$I)
- Could also include elements derived from MARC 21 bibliographic record (e.g., performer, narrator, and/or presenter)

### Related entities

- Elements derived from MARC 21 bibliographic record (700)
- Relationship to person associated with the expression represented by link to related record (700 \$0) with relationship designator (700 \$e)



### Attributes of person

- Preferred name for the person (100 \$a)
- Variant name for the person (400 \$a)
- Date of birth (100 \$d)
- Elements derived from MARC 21 authority record (100 \$a, \$d, 400 \$a)
- Stored in logical groupings paralleling FRAD model

### Related entities

- Elements derived from MARC 21 authority record (500)
- Relationship to related person represented by link to related record (500 \$0)
- Relationship to related person (500) could be enhanced with addition of RDA relationship designator